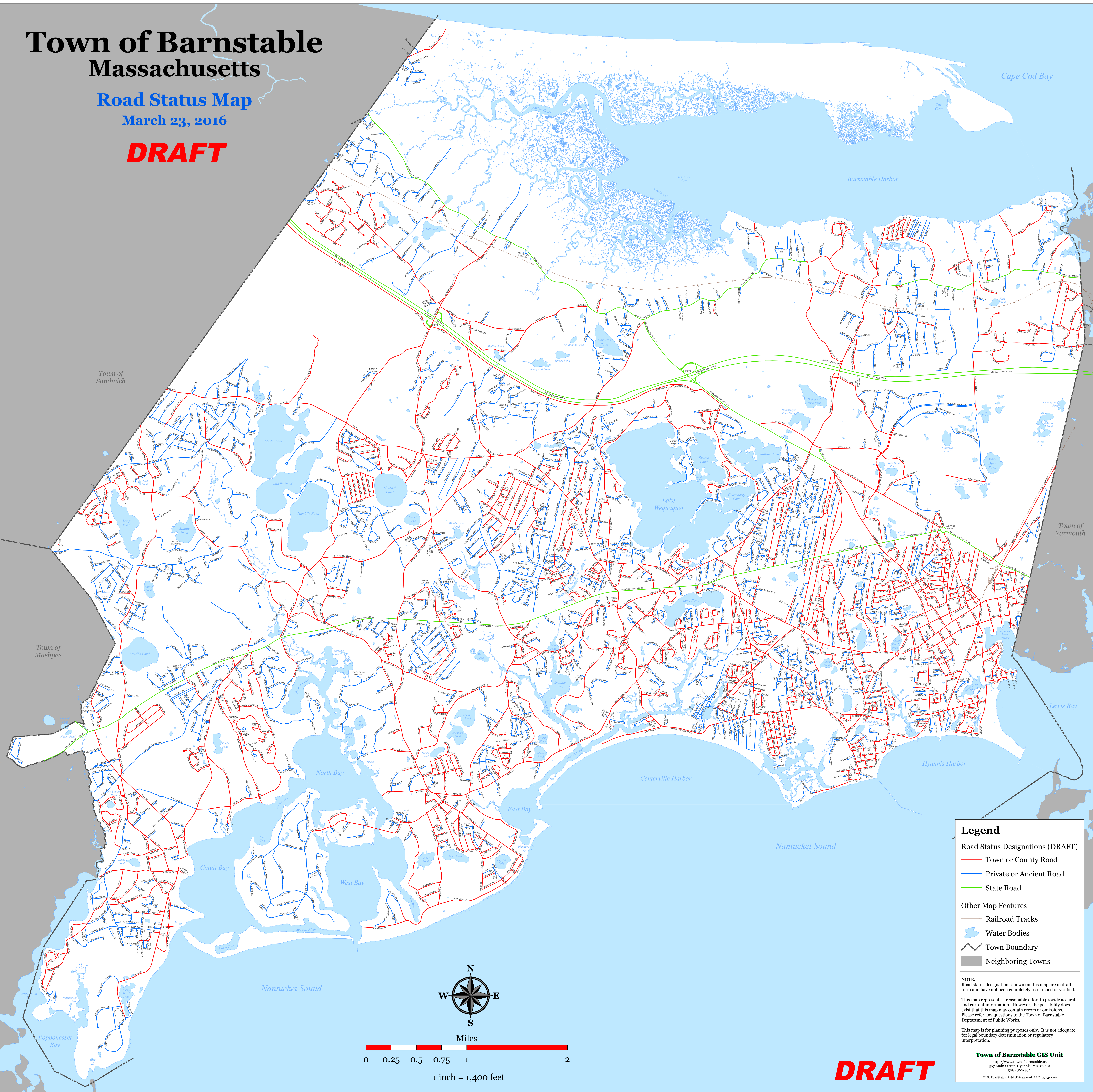


Town of Barnstable Massachusetts

Road Status Map

March 23, 2016

DRAFT



Legend

Road Status Designations (DRAFT)

- Town or County Road
- Private or Ancient Road
- State Road

Other Map Features

- Railroad Tracks
- Water Bodies
- Town Boundary
- Neighboring Towns

NOTE:
Road status designations shown on this map are in draft form and have not been completely researched or verified. This map represents a reasonable effort to provide accurate and current information. However, the possibility does exist that this map may contain errors or omissions. Please refer any questions to the Town of Barnstable Department of Public Works.

This map is for planning purposes only. It is not adequate for legal boundary determination or regulatory interpretation.

Town of Barnstable GIS Unit
http://www.townofbarnstable.com
307 Main Street, Hyannis, MA 02601
(508) 862-4624
FILE: RoadStatus_PublicPrivate.mxd J.A.B. 3/23/2016

DRAFT